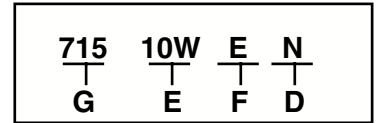
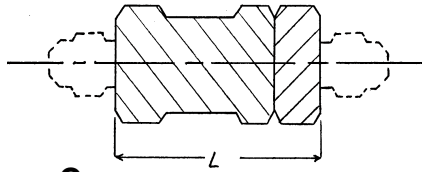
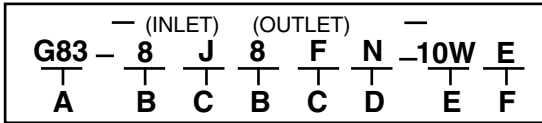


SAMPLE ASSEMBLY

HOW TO ORDER

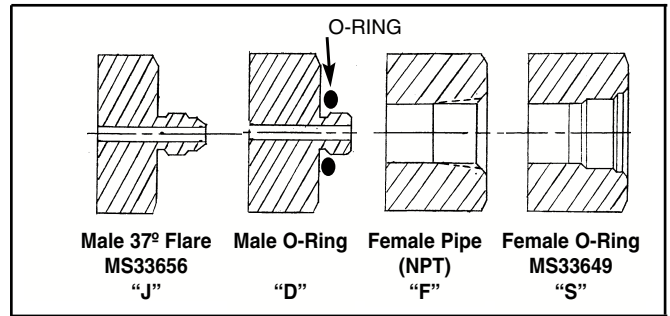
SAMPLE ELEMENT



HOUSING MATERIAL		
#	DESCRIPTION	
G83	316 S.S.	3000 PSI
S83	303 S.S.	3000 PSI
P84	17-4 PH. S.S.	6000 PSI
P84 10K	17-4 PH. SS	10000 PSI

PORT SIZE	
#	PORT
2	1/8
4	1/4
6	3/8
8	1/2
12	3/4
16	1

FITTING	
#	DESCRIPTION
D	Male O-Ring
F	Female Pipe
J	MS-33656
S	MS-33649



O-RINGS		
#	MATERIAL	TEMPERATURES
N	Nitrile (Buna "N")	- 40°F TO 250°F
V	Viton ®	- 20°F TO 400°F
S	TEV	- 4°F TO 400°F
E	Ethyl Prop	- 60°F TO 300°F
K	Kalrez ®	- 40°F TO 550°F

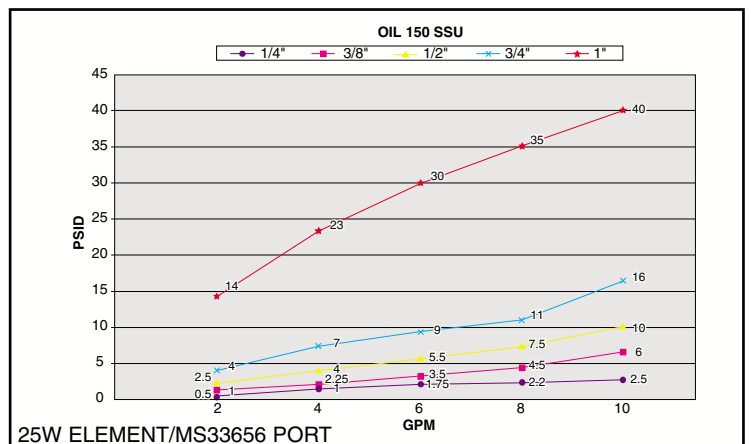
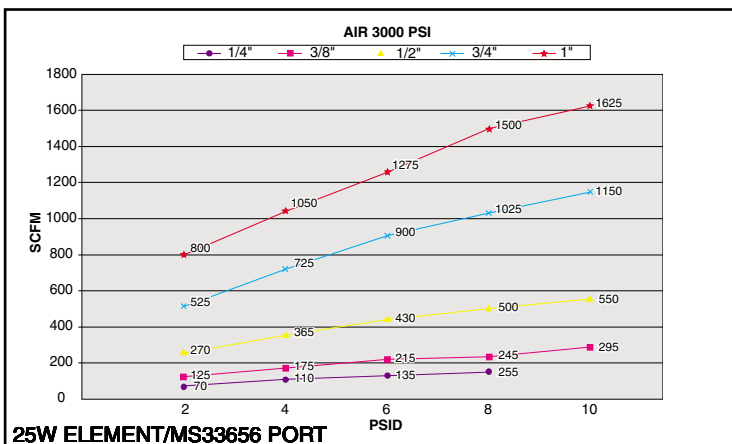
MICRON RATING					
#	DESCRIPTION	ABS	#	DESCRIPTION	ABS
10W	S.S Wire Mesh	10	3M	Microglass	3
18W	S.S Wire Mesh	18	6M	Microglass	6
25W	S.S Wire Mesh	25	12M	Microglass	12
40W	S.S Wire Mesh	40			
75W	S.S Wire Mesh	75			
150W	S.S Wire Mesh	150			

COLLAPSE RATING	
#	PRESSURE
D	3250 PSID
E	4500 PSID

REPLACEMENT ELEMENT
see specification chart

SPECIFICATIONS

Material Size 1" Hex			Material Size 1-1/2" Hex			Material Size 1-1/2" Hex			Material Size 2" Hex or 2-1/4" Rnd			Material Size 2-3/8" Hex or 2-1/2" Rnd		
THREADS	SIZE	O.A.L.	THREADS	SIZE	O.A.L.	THREADS	SIZE	O.A.L.	THREADS	SIZE	O.A.L.	THREADS	SIZE	O.A.L.
NPT	1/8	4.81	NPT	1/8	4.75	NPT	1/4	6	NPT	1/2	7.75	NPT	3/4	8.75
Male O-Ring	1/4	4.12	Male O-Ring	3/8	4.25	Male O-Ring	1/2	5.5	Male O-Ring	3/4	7	Male O-Ring	1	8.25
MS33649	-4	4.81	MS33649	-6	4.75	MS33649	-8	6	MS33649	-12	7.75	MS33649	-16	8.75
MS33656	-4	4.12	MS33656	-6	4.25	MS33656	-8	5.5	MS33656	-12	7	MS33656	-16	8.25
Rated Flow*			Rated Flow*			Rated Flow*			Rated Flow*			Rated Flow*		
Oil at 150SSU	-	2.5GPM	Oil at 150SSU	-	6GPM	Oil at 150SSU	-	10GPM	Oil at 150SSU	-	16GPM	Oil at 150SSU	-	40GPM
Air at 100PSIG	-	15SCFM	Air at 100PSIG	-	40SCFM	Air at 100PSIG	-	75SCFM	Air at 100PSIG	-	195SCFM	Air at 100PSIG	-	340SCFM
Air at 3000PSIG	-	155SCFM	Air at 3000PSIG	-	295SCFM	Air at 3000PSIG	-	550SCFM	Air at 3000PSIG	-	1150SCFM	Air at 3000PSIG	-	1625SCFM
Element Area	-	8.5in ²	Element Area	-	15in ²	Element Area	-	25in ²	Element Area	-	60in ²	Element Area	-	101in ²
Replacement Element	-	711	Replacement Element	-	712	Replacement Element	-	713	Replacement Element	-	715	Replacement Element	-	716



© T.M. of DuPont



4642 West 92nd Street
 Oak Lawn, IL 60453
 Phone (708) 636-6240
 Toll Free 866-3BFILTERS (323-4583)
 Fax (708) 636-6251
 3Bfilters@ameritech.net