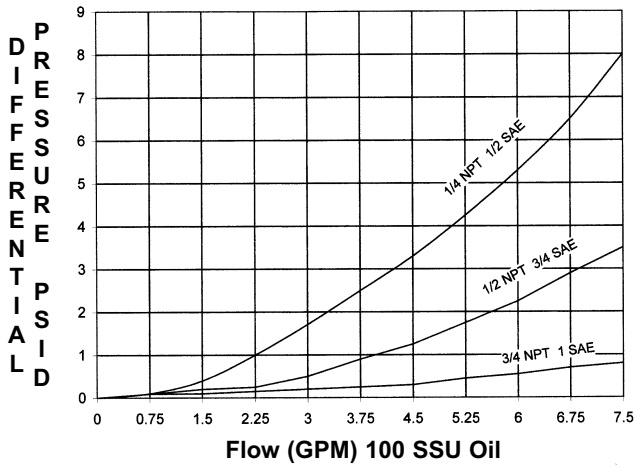


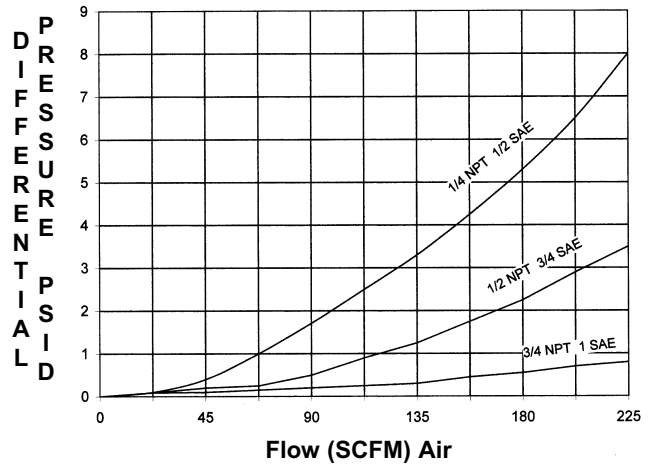
8700 Series T-Type Filters Rated for applications up to 30,000 PSI and flows up to 7.5 GPM

FLOW DATA (PRESSURE DROP vs. FLOW)

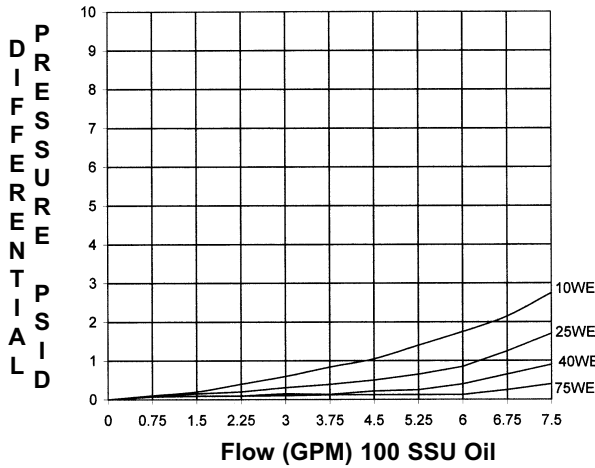
8700 Filter Housing Less Element



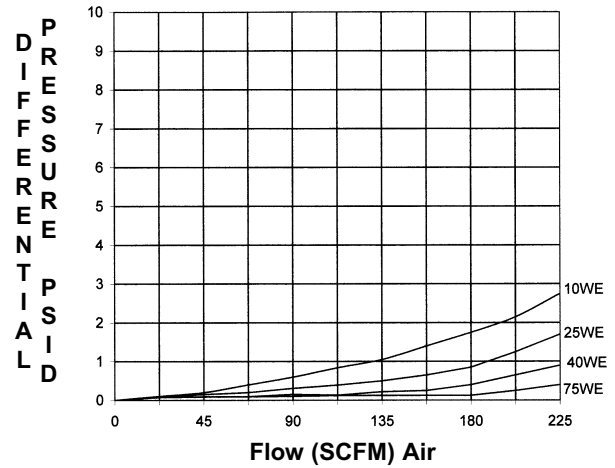
8700 Filter Housing Less Element



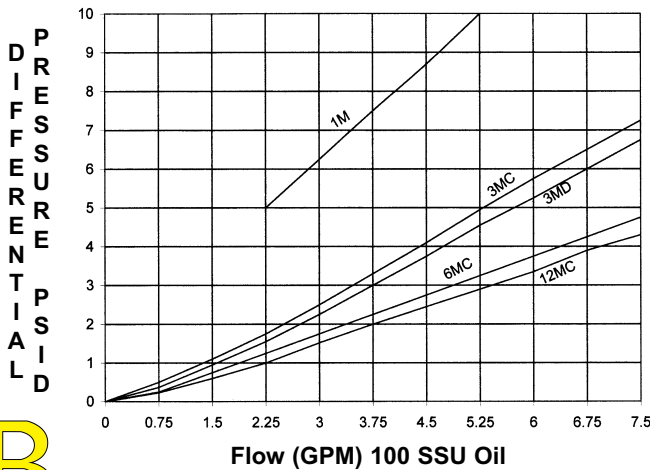
232 Stainless Element



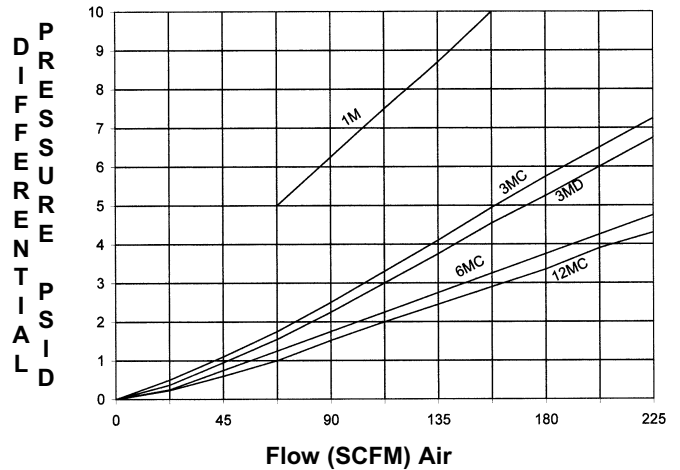
232 Stainless Element



232 Micro-Glass Element



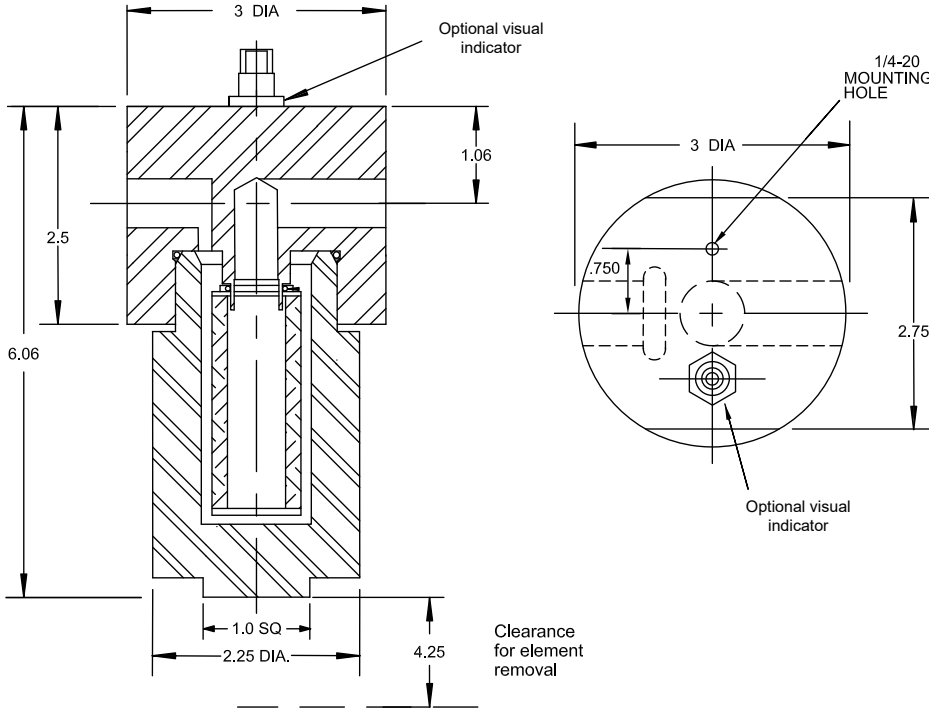
232 Micro-Glass Element



8700 Series T-Type Filters

Rated for applications up to 30,000 PSI and flows up to 7.5 GPM

Follow table to table to configure the part number for the assembly or replacement element you wish to order.



Specifications

Code	A87	G87
Material	Aluminum	316 SS
Operating	2,000 PSI	6,000 PSI
Proof	3,000 PSI	9,000 PSI
Burst	8,000 PSI	24,000 PSI
Weight	2 Lbs.	6 Lbs.

Specifications

Code	G1	P
Material	316 SS	17-4PH
Operating	10,000 PSI	20,000 PSI
Proof	10,000 PSI	30,000 PSI
Burst	40,000 PSI	100,000 PSI
Weight	17 Lbs.	17 Lbs.

Note: Bypass, visual, and electrical indicators have been tested to 60,000 PSI without leakage.

Caution: NPT max working pressure is 10,000 PSI. HP Port max working pressure is 30,000 PSI.

