

89 Series Spin-On Filters

FILTER ASSEMBLY PART NUMBER

89A 1 - 0 12 - 10C S N - G

PORT SIZE AND TYPE

Code	Port Size	Port Type
1	1/2"	NPT
2	3/4"	NPT

GAGE ACCESSORY

Code (Optional)	Description
G	Gage Included

- This is an optional accessory, omit this character if not desired.

BYPASS

Code	Bypass Setting
0	No Bypass
1	3 PSI
4	25 PSI

O-RING TYPE

Code	Description	Temperature (°F)
N	Nitrile (Buna)	-40 to 250
V	Viton	-20 to 400
E	EPR	-60 to 300

- Viton products will incur additional product cost

BOWL LENGTH

Code	Description
S	Short
L	Long

- Longer bowl has more dirt holding capacity

GAUGE PORTS

Code	Bypass Setting
0	No Gauge Port
1	Inlet #1
2	Inlet #2
3	Inlet #3
5	Outlet #5

- You can select more than one gauge port on a single filter. You just cannot select the same number twice or select 0 and another port.

- Examples of acceptable gauge port codes: 0, 1, 3, 12, 13, 125, 1235

MICRON RATING

Code	Material	Absolute
1M	Microglass	1
3M	Microglass	3
6M	Microglass	6
12M	Microglass	12
25M	Microglass	25
3C	Cellulose	3
10C	Cellulose	10
25C	Cellulose	25
10CW	Water Absorbing Cellulose	10
141S	Mesh SS	100

REPLACEMENT FILTER PART NUMBER

89E 3M S V

REPLACEMENT HEAD PART NUMBER

89H 1 - 0 13

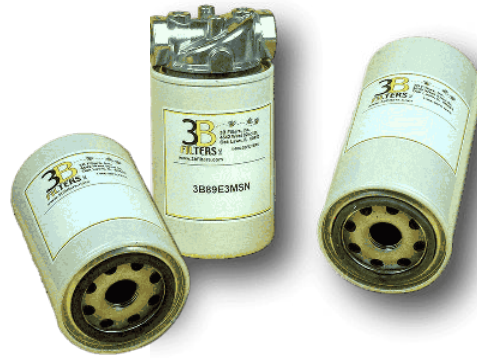
O-RING TYPE
BOWL LENGTH
MICRON RATING

GAUGE PORTS
BYPASS
PORT SIZE AND TYPE

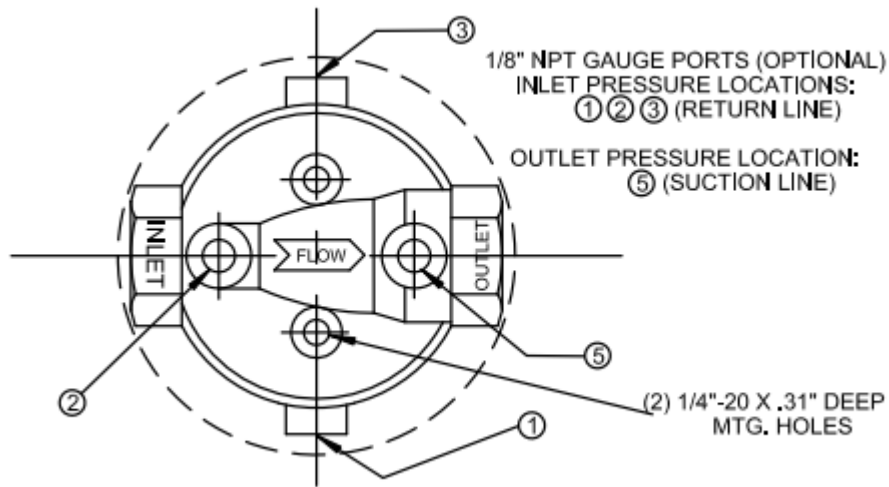
ADDITIONAL SPECIFICATIONS

- Operating pressure = 175 PSI
- Rated flow rate up to 37 GPM
- Temperature range: -65°F to +250°F
- Suited for petroleum-based fluid applications only
- Head = Cast Aluminum, Element = Drawn Steel

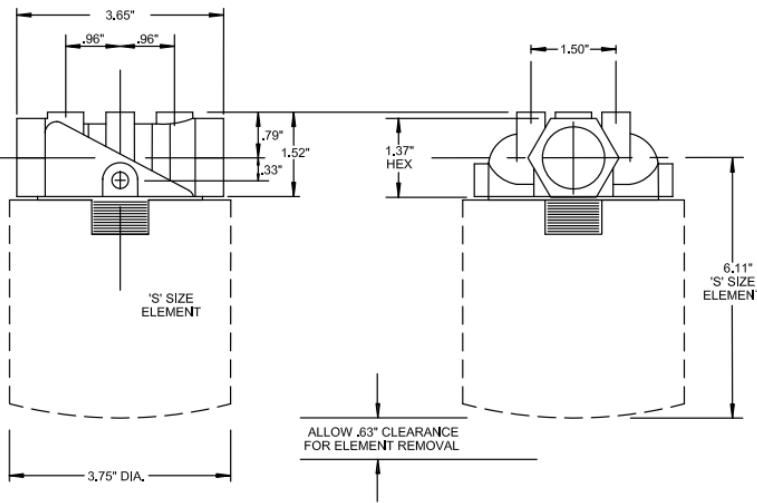
89 Series Spin-On Filters



DIMENSIONS



"S" ELEMENT SIZE / BOWL LENGTH



"L" ELEMENT SIZE / BOWL LENGTH

